

A photograph of two male workers in profile, facing left, at an industrial facility. They are wearing white hard hats, safety glasses, and earplugs. The worker in the foreground is wearing a blue long-sleeved shirt with yellow reflective stripes and a 'SUNBELT' logo on the sleeve. The worker behind him is wearing a black shirt with a yellow reflective vest. They are standing on a metal walkway with railings. In the background, there are industrial structures, including a tall tower and various pipes and tanks, under a clear sky.

ANR Monthly Customer Update

June 2021



TC Energy

Agenda

1. Safety moment & TC Energy update

DeAnna Parsell, Noms & Scheduling

2. Storage update

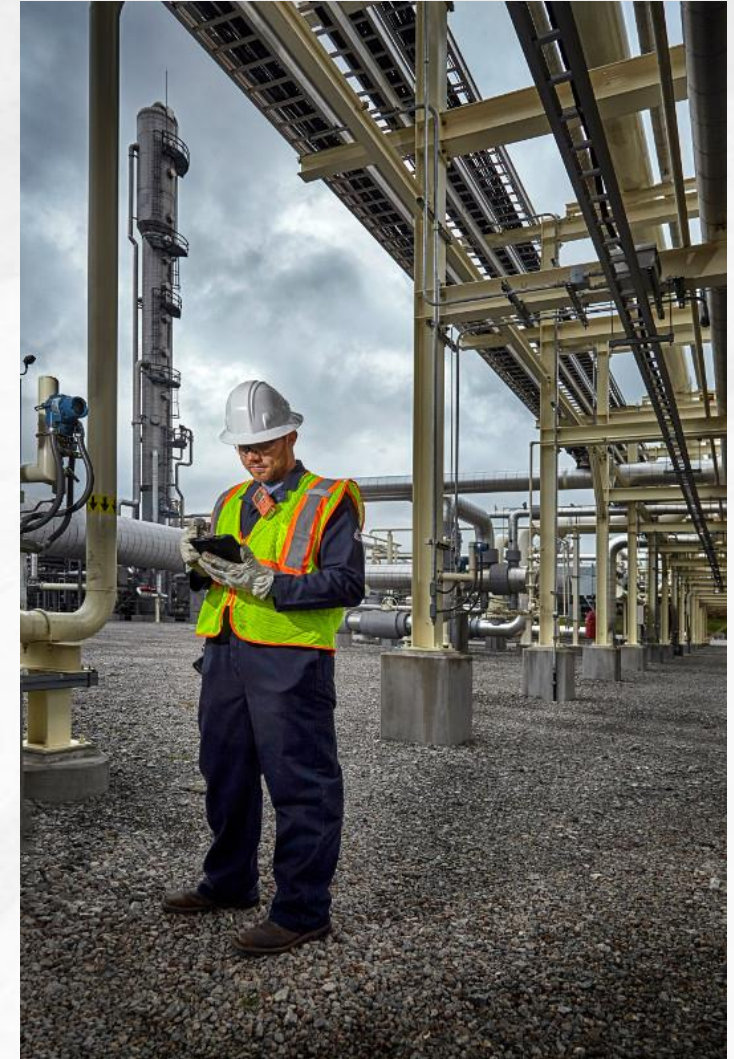
Jeffery Keck, Operations Planning

3. Operational update

Michael Gosselin, Operations Planning

4. Noms & Scheduling update

DeAnna Parsell, Noms & Scheduling





Safety Moment

Stay safe in hot weather

- Stay hydrated by drinking plenty of fluids
 - Avoid drinks with caffeine or alcohol
- Avoid extreme temperature changes
- Slow down, stay indoors and avoid strenuous exercise during the hottest part of the day
- Postpone outdoor games and activities
- Check on animals frequently to ensure they are not suffering from the heat
 - Make sure they have plenty of cool water



TC Energy Summer Scholars Academy

Read more on the program in the University of Houston's press release:

UH.edu/nsm/news-events

Click on the June 7, 2021, release titled:


“TC Energy Foundation Commits \$125K to Invest in Incoming UH STEM Students”



“Innovation in science, technology, engineering and mathematics (STEM) is key in the constantly evolving landscapes here at TC Energy and requires new waves of thought from the next generation of leaders. We are proud to support the University of Houston's diverse group of students through the TC Energy Summer Scholars Academy as they develop the tools necessary to be at the forefront of those conversations.”

Eric Miller

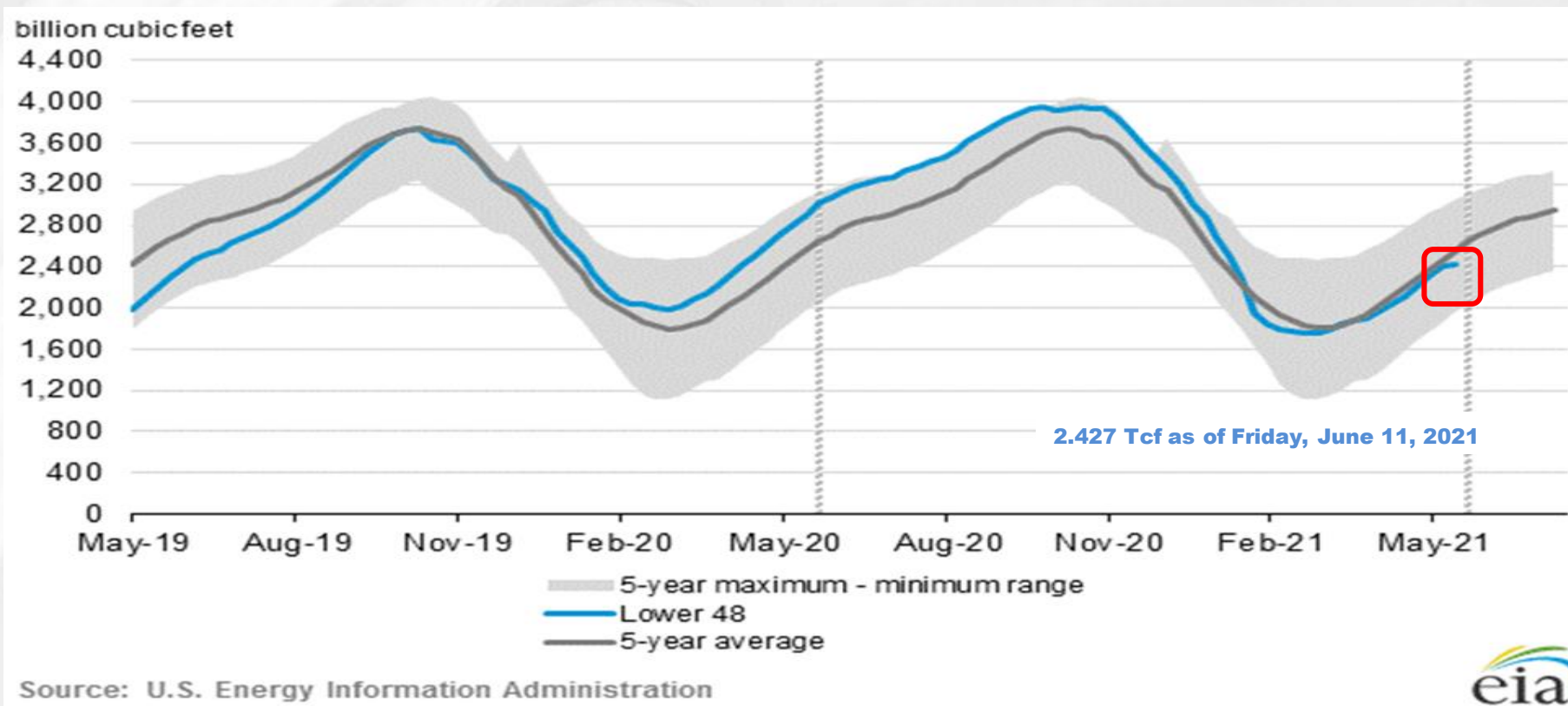
TC Energy Director of Marketing, West



Storage update
Jeffery Keck – Operations Planning

EIA storage position: The big picture

Working gas in underground storage compared with the five-year maximum and minimum



453
bcf

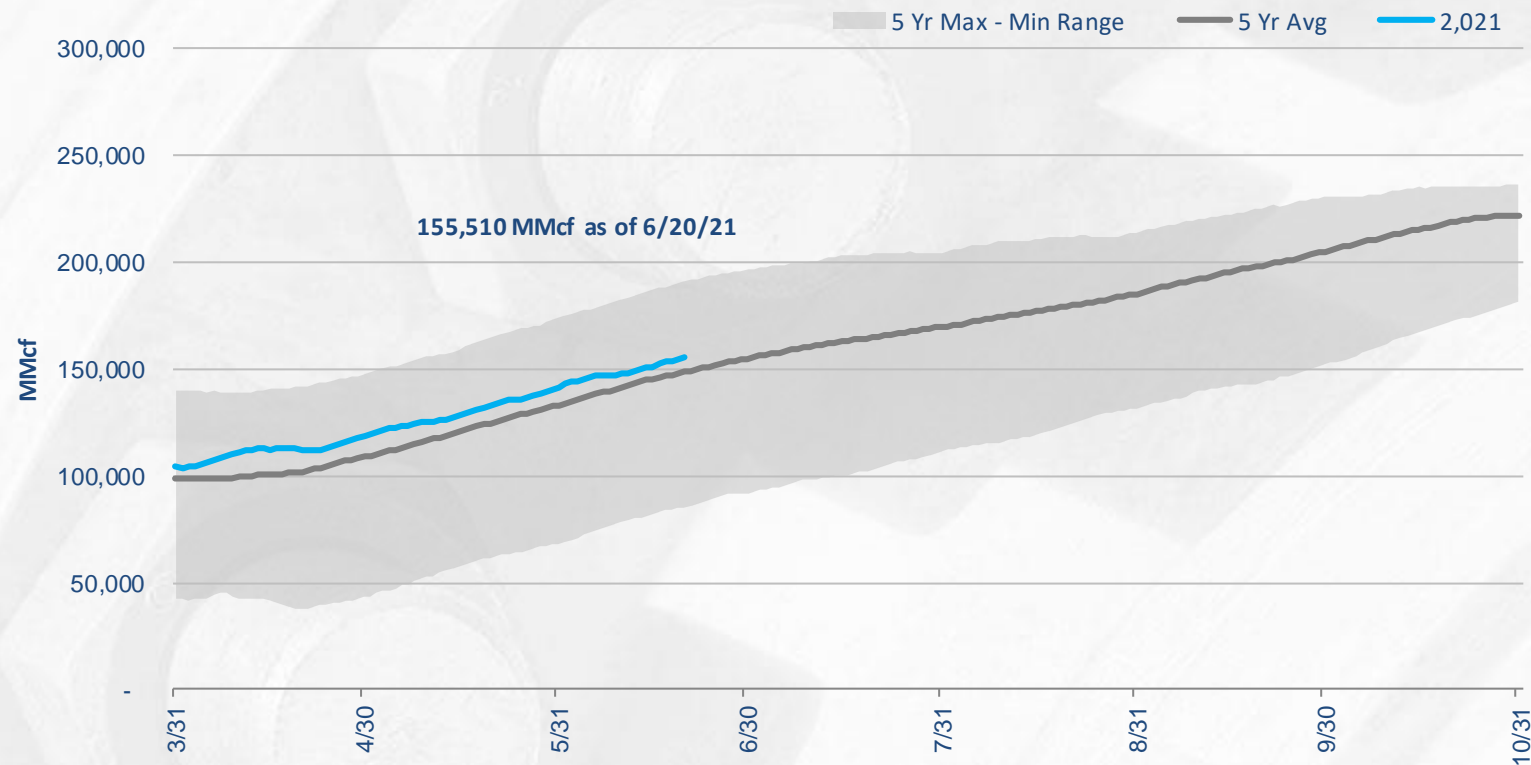
than June 2020

126
bcf

*below the
five-year average*

Storage position

Working gas in underground storage compared with the five-year maximum and minimum



35
bcf

than June 2020

7
bcf

*above the
five-year average*

Storage operations

- From May 16 – June 20, storage activity averaged an injection of 760-MMcf/d. Daily activity varied from an injection of 1.17-Bcf/d to a withdrawal of 240-MMcf/d.
- ANR has met all firm customer demand for storage activity.
- Storage capacity is 62 percent full almost three months into the injection season.
- There are currently no postings restricting storage activity and no planned restrictions on DDS capacity.



Storage operations

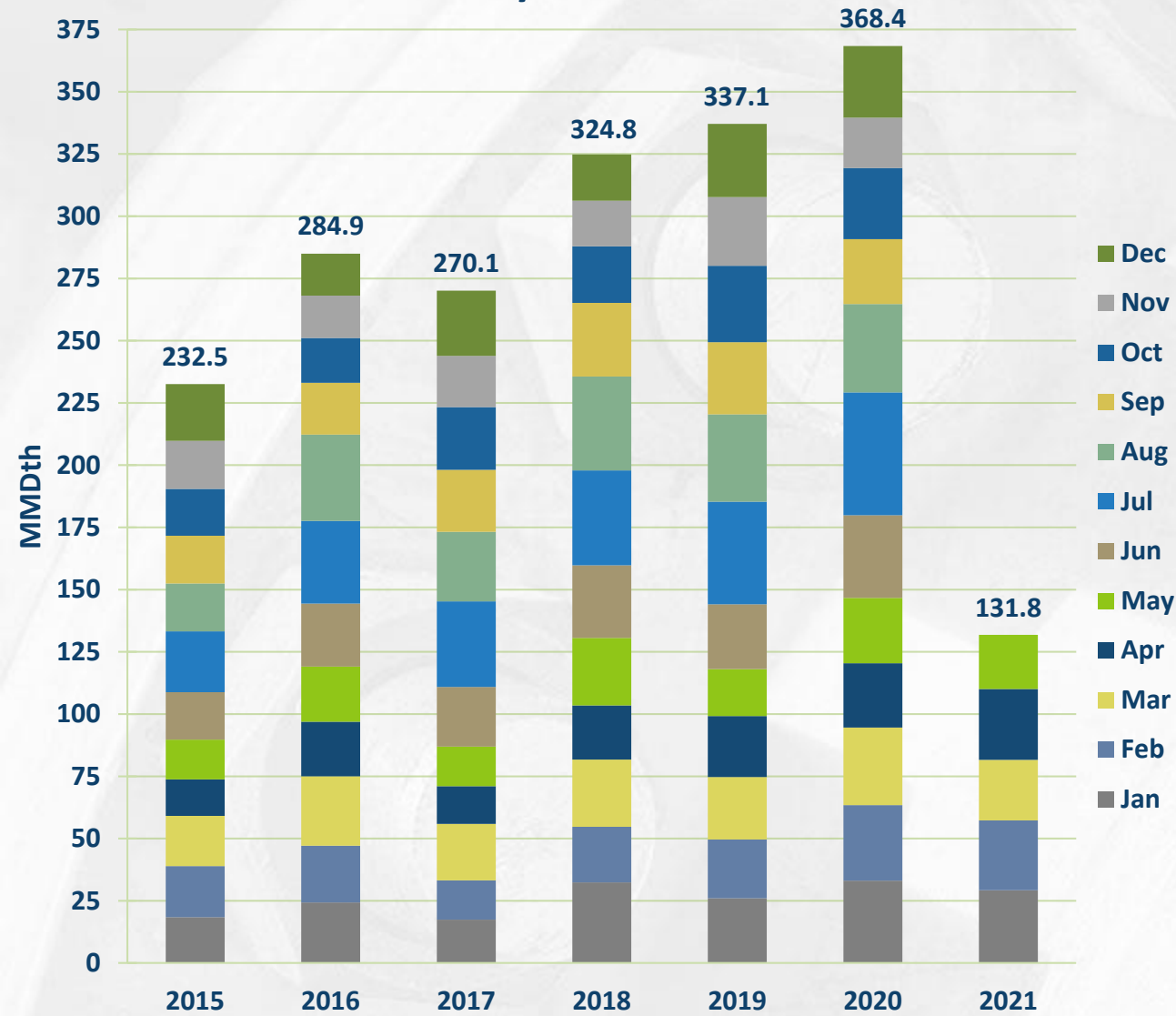
- Storage activity is primarily injection, but some withdrawals may still be possible under certain conditions
- There is planned maintenance, but sufficient injection capacity will be maintained to ensure firm injection demand is met
 - If needed, sufficient withdrawal capacity is available to meet anticipated demand
- The available capacity will continue to be reflected on the EBB under the operationally available capacity



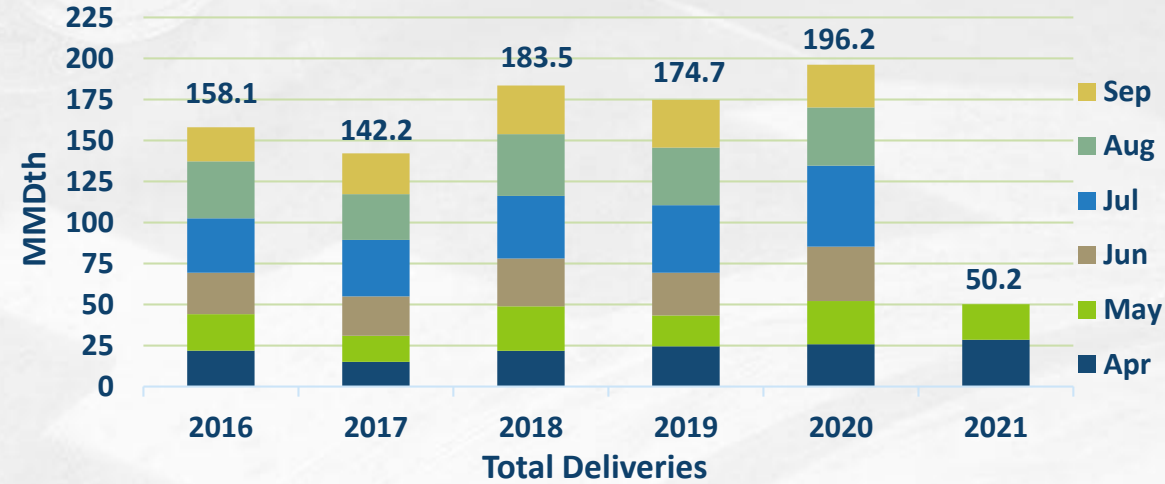
Operational update
Michael Gosselin – Operations Planning

Monthly deliveries to Power Plants

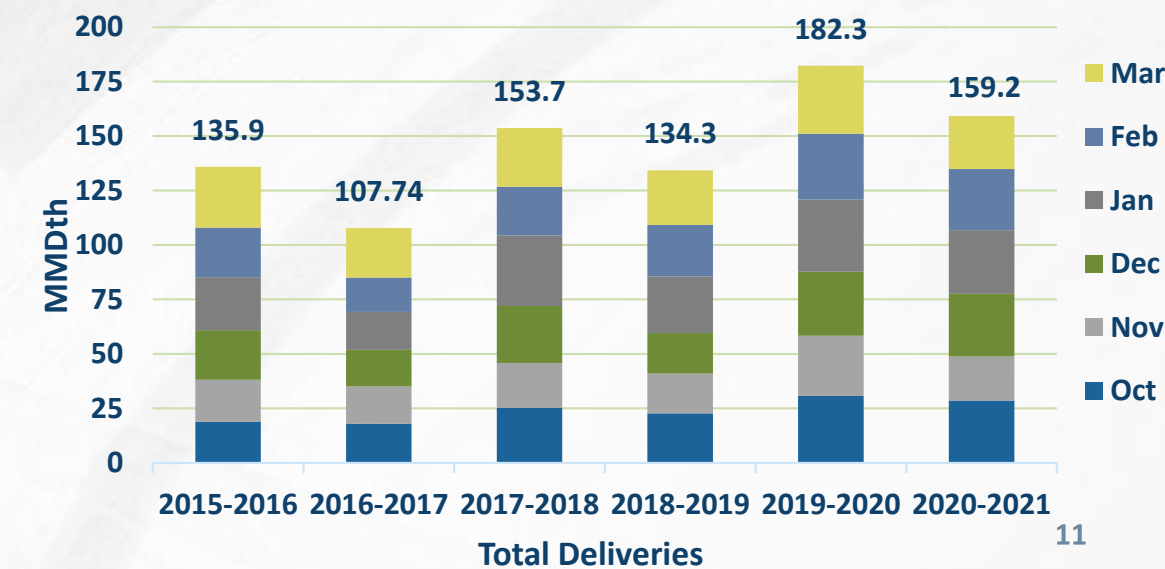
Total Monthly Power Plant Deliveries



Summer Power Plant Deliveries



Winter Power Plant Deliveries



Capacity impacts (SW & Northern Areas)

[illegible][illegible]

Capacity impacts (SE Area)

		Cap (MMcf/d)		June																															July																															
Dates	Area/Segment/Location		Impact	Avail																																																														
Southeast Area				1	2	3	4	5	6	7	8	9	10	11	12	13	14	15	16	17	18	19	20	21	22	23	24	25	26	27	28	29	30	1	2	3	4	5	6	7	8	9	10	11	12	13	14	15	16	17	18	19	20	21	22	23	24	25	26	27	28	29	30	31		
Stingray Int (LOC #135819)																																																																		
12/2 - 12/31	Pipeline - Integrity		N/A	Shut In																																																														
Multiple Meters - Cameron Area																																																																		
12/2 - 8/31	Pipeline - Integrity / Hurricane Laura Damage		N/A	Shut In																																																														
Patterson/Trunkline Del (LOC #40317)																																																																		
7/19	Patterson Compressor - Safety System Test			FPO																																																														
Patterson to Col Gulf (LOC #43613)																																																																		
7/19	Patterson Compressor - Safety System Test			FPO																																																														
Shadyside/TGP (Del) (LOC #467240)																																																																		
7/19	Patterson Compressor - Safety System Test			FPO																																																														
Weeks Isla/Lig PI (LOC #233620)																																																																		
6/17 - 6/30	Charenton Canal Integrity Dig			FPO																																																														
St. Martinville E to LRC (LOC #218192)																																																																		
6/17 - 6/30	Charenton Canal Integrity Dig			FPO																																																														
7/19	Patterson Compressor - Safety System Test			FPO																																																														
Riverway (To Bridgeline) (LOC #42593)																																																																		
7/19	Patterson Compressor - Safety System Test			FPO																																																														
St. Landry/FI Int (LOC #322625)																																																																		
6/17 - 6/30	Charenton Canal Integrity Dig			FPO																																																														
Eunice Southbound Location (LOC #226640)																																																																		
6/21 - 6/30	Pipeline Maint - Pig Trap		82	604																																																														
7/1	Grand Chenier CS - Safety Test		200	486																																																														
Pine Prairie South REC (LOC# 766184)																																																																		
7/6 - 7/16	Compressor Maint & Integrity Digs			FPO																																																														

Capacity impacts (SEML)

[illegible]

Outage postings

- Service impacts are estimates. Actual nominations, markets, weather and pipeline conditions determine any level of curtailments.
- Projects may be added, altered, delayed or cancelled. Emergent work cannot be planned and will happen from time to time.
- Notice of such planned work, including additions or changes, will be provided via a posting under the Planned Service Outage (PSO) category in GEMS. Emergent work will be posted under the Critical Notice category as soon as possible.



Access TC Plus Maintenance Schedules

1. TCPlus.com
2. Select Pipeline
3. Planned Service Outage
4. Select the posting with *Planned Maintenance Schedule* in the subject line.

The screenshot shows the TC Plus website interface. The browser address bar shows www.tcplus.com. The page title is "Great Lakes Gas Transmission Limited Partnership". The page content includes a list of facts about the pipeline and a "Planned Service Outages" section. The "Planned Service Outages" section has a sidebar with links: Capacity, Gas Quality, Index of Customers, Locations, Notices, Critical, Non-Critical, Planned Service Outage, Request to Purchase Releasable Capacity, and Waste Heat. The "Notices" link is highlighted. The "Planned Service Outages" section displays a table of notices. The table has columns: Notice Type, Posting Date/Time, Notice Eff Date/Time, Notice ID, Subject, Rep Date/Time, Prior Notice, Notice Status, Attachments, and Actions. The table contains one row: Plnd Outage, 06/22/2021 11:45, 06/22/2021 11:45, 484, Great Lakes Planned ..., 06/22/2021 11:45, 481, Supersede, yes, and a "view" button. The "view" button is highlighted.

1. www.tcplus.com

2. [Great Lakes Gas Transmission](#)

3. [Notices](#)

4. [Planned Service Outage](#)

5. [view](#)

Notice Type	Posting Date/Time	Notice Eff Date/Time	Notice ID	Subject	Rep Date/Time	Prior Notice	Notice Status	Attachments	Actions
Plnd Outage	06/22/2021 11:45	06/22/2021 11:45	484	Great Lakes Planned ...	06/22/2021 11:45	481	Supersede	yes	view

Great Lakes Planned Maintenance Schedule (Updated 6/22/2021)

Access TC Plus Maintenance Schedules (continued)

5. Select the attachment under *Notice Details*.
6. Schedule will open in a new window or may be in your *Downloads* folder (browser dependent).

GREAT LAKES >

Capacity >

Gas Quality >

Index of Customers

Locations

Notices >

Posted Imbalances

Regulatory

Standards of Conduct >

Tariff >

Transactional Reporting >

Notice Search

System Maps

Contact Information

Presentations

Meter Request >

Home > Planned Service Outages > Notice Details

Download >

Notice Details

TSP Name

Great Lakes Gas Transmission Limited Partnership

Notice ID

484

TSP

046077343

Notice Eff Date:

06/22/2021

Posting Date/Time:

06/22/2021 11:45

Notice End Date:

01/01/2022

Critical:

Yes

Notice Eff Time:

11:45

Notice Type:

Plnd Outage

Notice End Time:

08:59

Notice Status:

Supersede

Required Response:

No response required

Prior Notice ID:

481

Response Date/Time:

Subject

Great Lakes Planned Maintenance Schedule (Updated 6/22/2021)

Message Text

GLGT has made the following changes to the Planned Maintenance Schedule:

Added Pipeline Maintenance at Deer River EastBound (LOC#3848928) location.

Attachments:

[Maintenance Schedule 20210622.pdf](#)

Great Lakes Gas Transmission Maintenance Schedule (Updated 06/18/2021)

June 2021	Location	Capacity Impact	Available Capacity	Potential Firm Primary Cuts	Potential Firm Secondary/ITS Cuts
	Emerson Eastbound (LOC# 3833975)				
6/22 - 6/30	St. Vincent CS Maintenance and Pipeline Maintenance - Shevlin Class Change Derate	424-MMcf/d	1,877-MMcf/d	Low	Low
	Deer River EastBound (LOC#3848928)				
6/23	Pipeline Maintenance 100-line ILI	769-MMcf/d	1,480-MMcf/d	Medium	High
6/25	Pipeline Maintenance 200-line ILI	774-MMcf/d	1,495-MMcf/d	Medium	High
6/28	Pipeline Maintenance 200-line ILI	769-MMcf/d	1,480-MMcf/d	Medium	High
6/29	Pipeline Maintenance 200-line ILI	774-MMcf/d	1,495-MMcf/d	Medium	High
6/30	Pipeline Maintenance Station 4 to Station 5 EMAT run	864-MMcf/d	1,405-MMcf/d	Medium	High
July 2021	Location	Capacity Impact	Available Capacity	Potential Firm Primary Cuts	Potential Firm Secondary/ITS Cuts
	Emerson Eastbound (LOC# 3833975)				



Nominations & Scheduling update

DeAnna Parsell – Noms and Scheduling

Constraint Highlight: Basile Lateral Flow-Through (Loc 226646)

Located in ANR's SE Area

Created to better control gas traveling through the Eunice Compressor Station

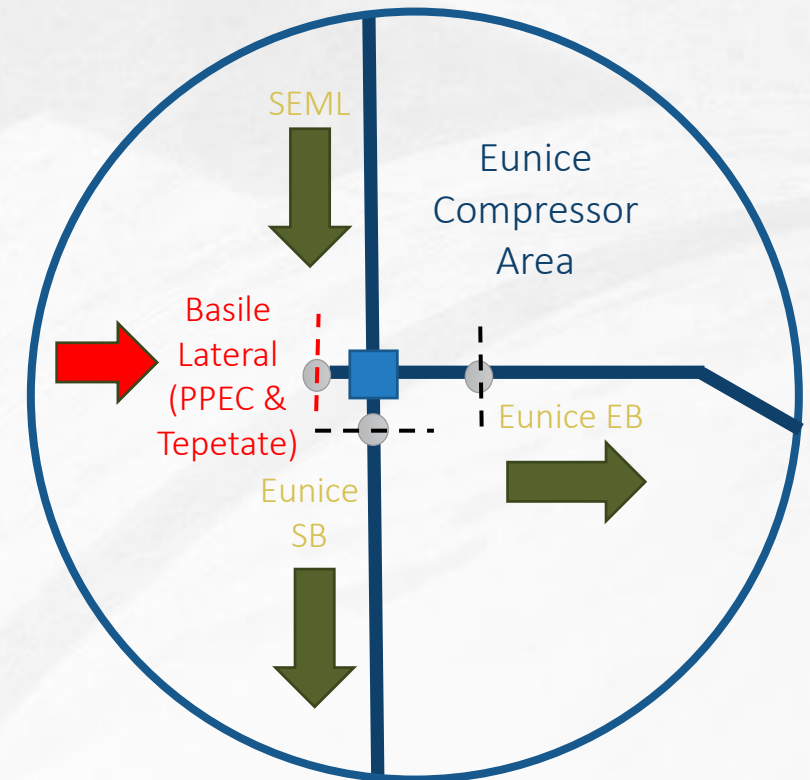
- Aligns GEMS with physical gas flow
- Simple flow-through location

Potential impact only to **net receipts** at the following locations

- Pine Prairie South Rec (Loc 766184)
- Pine Prairie South Del (Loc 766185)
- Tepetate (Loc 1387567)

Can be constrained on a stand-alone basis or in conjunction with other constraints

More tools in the toolbox allow ANR to manage the system more effectively



ANR customer assistance

For customer assistance concerning scheduling priorities, firm service rights and features, GEMS new user training, virtual and face-to-face meetings, etc., please contact the ANR Noms & Scheduling Team:

Toll Free: 1-800-827-5267

Group Email: ANR_Noms_Scheduling@tcenergy.com

Web address for the ANRPL Tariff: ebb.anrpl.com

Questions